

Gore Branch of New Zealand Society of Genealogists September

CONVENOR Rhonda Wilson	208 4433
SECRETARY Vicki Newman	204 8673
TREASURER Jo Muir	248 6474
BULLETIN Avis McDonald	208 6812
WEBMASTER Liz O'Connell	208 3727
WEB SITE	goregenealogy.weebly.com
NZSG WEB SITE	www.genealogy.org.nz



Next Meeting
Hokonui Heritage Center
1st September 2015
Tuesday 7pm

Bring along a photo of a family headstone. Tell us a little about that person.

Also tell us 2 family names you are researching (you never know, someone else in the group maybe researching the same family!!
Now wouldn't that be handy)

Michelle Patient and Barbara Wylie's Visit

We were all very fortunate to hear several brilliant presentations during their 11 day visit to the South Region. They had already given talks at Auckland Family Research Center at Panmure prior to coming south on the same flight to Dunedin as I was on 12 August. They were hosted by Dunedin NZSG branch and spoke at their Showcase on Friday night, Saturday and Sunday

Wardens Court and Miners Rites by Prue Turnbull



Prue spoke on the wealth of information available at Dunedin Archives. NZSG was given permission to index these valuable documents which include goldmining

from Otago and Southland Every goldminer had to apply initially for a miner's right to prospect on a small patch of land. Records of these miners rights have not survived. Later, as miners wished to build water races or dams, they needed to apply for further licenses, and it is these documents that we have indexed, Licenses were signed by either the miner or an agent. It is amazing how many men of all types of work and professions who decided to try their luck. These **licenses which are indexed from 1861 – 1900** are listed on Archives NZ. Descriptions and maps of the plots and water races can be very precise to rough, and there is the occasional Will or personal letter included. Search on Archives site, but be aware it requires precise spelling of names. When you visit the Archives, take your camera, which is permitted and encouraged by the staff. Check on other men who are on the same licence application. Remember to also search for your man in Papers Past. Kae Lewis has indexed the Thames mining rights

Gore Pot Luck Dinner 18 August 2015

This was a fabulous night with members enjoying wonderful friendship, food and chatter. Michelle and Barbara have many ancestors and connections here area. George and Catherine Smith's Mimihau was a very welcome addition to Michelle's library.

Land Research in NZ, Sunday 16 August

Barbara gave an excellent presentation on this subject which is the first step in locating where your ancestors lived or farmed. The Southland records which were very large books, were originally housed in Invercargill in separate compartmental shelves, with front rollers to assist easy access by searchers.

Locating Your Family's Land

Some suggested resources - modern to old:

1. Telephone Books
2. Electoral Rolls
3. Addresses from BMD registrations
4. Family correspondence and photograph albums
5. Rural Holdings/Farm Location maps
6. Town or District Directories
7. Local Authority Rating Rolls
8. Maps and plans: cadastral, survey, etc.
9. District histories and family histories
10. Probates and wills
11. Newspapers
12. School Admission, Progress and Withdrawal Registers
13. 1882 Freeholders of New Zealand
14. Gazettes: Land Transfer Notices
15. Pre-1876 Electoral Rolls

Pre-1871 ("Deeds System" period) also:

16. Highway Board Assessment Lists
17. Jury Lists
18. Deeds Indexes (Archives NZ, online)
19. Turton's Land Deeds (North Island only)
20. Old Land Claims records (re pre-1840 purchases)

Obtain certificates of Title of the land your ancestors lived on. This is Civil Registration. Instruments flesh out the documents. Deeds and Parish registers Please note original Deeds are being thrown out by many lawyers offices.

The hard copies are no longer available, but are accessible electronically, a www.linz.govt.nz LINZ: "How to request a copy of a land record" <http://www.linz.govt.nz/docs/titles-and-records/landrecords/order-records-fact-sheet.pdf> NZSG members can request a search to be made from the 'Land Research Service'. Another valuable resource is available from Directories in NZ and overseas. Families didn't live in isolation and often had relatives in the same district. NZ Gazettes are available at Hocken Library and NZ FRC. Write to the Research team who will look up any names.

**Michelle Patient –19th August,
Is It True? the Facts Fun and Fiction of Family
History and Password Tips**

A large number of NZSG Gore branch members were present at the LDS church hall to hear the two presentations by "The Dream Team". Both of these ladies were so informative , and covered many subjects as they spoke.

Our sincere thanks go to Elder and Sister Beckman for kindness in permitting us to use their hall.



Wedding photo 1895

Michelle's excellent presentation included clues for identifying photographs, costumes and settings. Rounded corners on photographs were common in NZ and Australia in 1880, and 1908 saw rounded collars on men shirts. She strongly recommended scanning BOTH sides of photographs. The names on the back can be very important to your research later..

Determine when, why the record or photo was created and obtain two references to confirm records. If you hit a brick wall, it is wise to know when to stop searching, but return to it occasionally.

Don't ever believe indexes are infallible. They are created by HUMANS!!! Try to cite the original record if possible.



A Warm Welcome to a new member **Elizabeth Weir** and best wishes for your research.

From Michelle

Hi Ladies

As promised the link to the video for the LDS folk and your members

Password Tips.

<http://hackgenealogy.com/video-password-trick/>

This does actually work. Do try it.

Choose a song or poem, that you will always be able to remember.

Take the first letter of each word, reverse it, use a 1 for L, or number 0 for letter O.

"The time has come the walrus said"

would become ANCSwtchtt

then choose a date you will always remember such as which is not current.. maybe when your grandparents arrived in NZ. (**NOT** your marriage or children's or your birth year)

Ancestry.com password would be = **ANCSwtchtt1880**

(I am sure you can invent something very original which is completely unique. Avis)

Also some links for those wanting to research NZ made photographs:

Early Photography in NZ:

<http://canterburyphotography.blogspot.co.nz/>
<http://www.rootsweb.ancestry.com/~nzlscant/photographers.htm>
<http://www.onceagainimages.co.nz/>

**August Meeting Report 2015
Record Keeping by Elaine Scott**



Elaine touched on her early days of researching where you waited, sometimes patiently, for a reply to a letter, and compared it to today's almost instant reply to a search query on the computer.

She explained her system of colour coding families to keep them together, and also urged us to create our own coding system of Records to show where that piece of information came from.

Other tips included being ready for your next visit to a repository - "know what you need to find"

And lastly, when recording to your Genealogy Program, keep in mind what you want the finished article to look like.

Will anyone else understand your abbreviations?
Are your sources accurate? And is there a better source?

With many new ideas to consider, we made the tea, and stood round chatting.

Devon parish registers online at Findmypast.
Thousands of Sheriff Court Paternity Cases and prison registers and mental health records from Scotland <http://www.scottishindexes.com/>

Do look at these URLs. From Michelle and Barbara's presentations. They will remind you of their presentations

Copy and place URL at the very top of Chrome or Google – NOT in the box in the middle. It will not work.

<http://bit.ly/IsItTrueFFF>
<http://bit.ly/DunedinSaturday>
<http://bit.ly/DunedinSunday>



Barbara Wylie "The Rest of the Iceberg, researching beyond the Internet"

<http://bit.ly/RestOfIceberg>

- Sight the original record, whenever possible
- Locate several independent sources of evidence for each fact
- Identify conflicting information and resolve the conflict

Suggested resources

NZ Births, Deaths and Marriages online
<https://www.bdmhistoricalrecords.dia.govt.nz/search/>

White Wings – Henry Brett –
this is at Hokonui Heritage Center as is the Log of Logs

Log of Logs, Vols I, II & III – Ian Nicholson
A great online tool, these three books contain details and sources for first-hand shipboard accounts of particular voyages that are held in collections around the world. Useful information about them is here:

<http://freepages.genealogy.rootsweb.ancestry.com/~nzbound/logs.htm>

Cyndi's List

A portal to useful websites for research in any country. Check out the links to NZ archives, libraries and museums. www.cyndislist.com

FamilySearch Catalogue Search

Search their library catalogue by country, county, town, parish, and category to find what records have been microfilmed by the LDS Church for places in which you have research interests. Many of these records can be hired on film for you to read at your local Family History Centre or at an affiliate library.

(Visit the **Gore LDS on Thursday 5.30- 7pm** and do a search on your names. I found my paternal grandmothers line went back to early 1700. You could be pleasantly surprised)

If you are an NZSG member, you can hire films to be sent to the Family Research Centre at Panmure and read them remotely from your home computer. Magic!
<https://familysearch.org/catalog-search>



Australian Research – Michelle Patient

presented at Invercargill (Southland Branch)

If you have Australian research, use this site
<http://bit.ly/AusNotes>

Ruth McDowell chose to attend this lecture to assist her Australian research. It was very informative and an excellent presentation..

Record Repositories

Three levels of Government

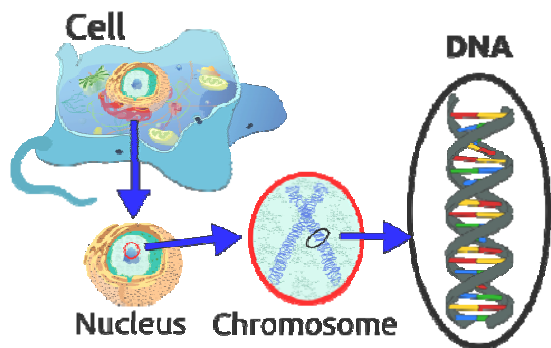
Federal (aka National)
State or Territory
Local Body

- It was astounding how the State lines/ borders changed several times over the early years.
- NZ was administered as part of NSW to 1840 (marriage, birth and deaths were registered there)

- Children's names and ages are listed on the NSW parents Death certificate.
- Trove is the equivalent of NZ Papers Past
- Family Search has the best records for South Australia
- Marriage- SA- brides mother's maiden name is added in 1964
- Detailed descriptions of Convicts include height, build, eye and hair colour, any distinguishing birth marks or scars, to assist the identification if they ran away, or erred in any way. At that time there were no photos

Most Records are State based

- Land
- Probate
- Most Criminal
- Schools
- Birth Deaths and Marriages\
- Divorce\
- Mining\
- Pre 1901 Military\Pre 1901 Immigration



- DNA kits are available from :
- Ancestry,
- Family Tree
- ged.match.com

BUT it is not a magic bullet.

You must have a paper trail to gain a good result.

We were so very privileged and honoured to have hosted Barbara and Michelle for 4 days, and it was pleasing to see members asking for assistance at the different branch meetings. **Special thanks to everyone who made them feel so welcome and helped to make their visit so successful.**

Websites and News

Do you have an ancestor who served with the British Merchant Navy during 1915? In a joint project between National Archives UK and National Maritime Museum, 39,000 crewlists have been digitised, along with 750,000 names of crew members. You can search by either name or by ship. And it is all online free at:

<http://1915crewlists.rmg.co.uk>

ScotlandsPeople has issued statutory birth, marriage and death indexes for 2014. Updated indexes for statutory records until the end of 2014, and images for births until 1914, marriages until 1939 and deaths until 1964.

Findmypast

In 1939, on the eve of the Second World War, the UK government introduced an act that would allow them to gather vital information about the country's population. This information would inform decisions on identity cards and rationing.

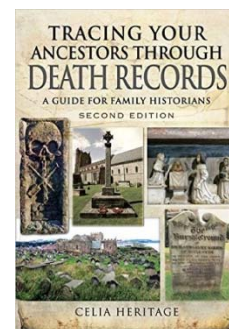
In 2015 Findmypast, in partnership with The National Archives, are publishing the Register online, for the first time. The 1939 Register provides unprecedented insight into a country on the verge of war, and bridges the gap in Census records caused by this war.

You can sign up to receive updates on the release of the Register from Findmypast.

Tracing Your Ancestors Through Death Records

Check out the August LostCousins Newsletter for an interesting book review, amongst other comments, reminding us to also consult the many records created after a death.

(<http://lostcousins.com/newsletters2/aug15news.htm>)



HOW TO

PapersPast (NZ) and Trove (Australian) we all know well. For the UK explore either the Gale Newspaper collection available via your NZ Society of Genealogists Subscription or the British Newspapers 1710-1953 available on our computers at the APFHC under FindMyPast?

Someone must have done a comparison between the two collections, but basically, if you can't find what you're looking for on one, try the other if you can. The Gale collection is entitled *British Newspapers, 1600-1950*. Both include other countries, FindMyPast offering Irish and US & World newspaper filters, and Gale via NZSG including the Times Digital Archive and 19th century US Newspapers, amongst other collections. X Kapati Branch