

COMMITTEE**Convenor**

Raewyn NEVIN

Ph: 443-3040

mevin@snap.net.nz**Secretary**

Linda PINDER

Ph: 478-5201

Linda_pinder@yahoo.com.au**Treasurer**

Colleen PETRICEVICH

Ph: 445-6219

petcom@ihug.co.nz

Louise COLLENETTE

Ph: 419-2035

D.LOUISE@xtra.co.nz

Sharron PETERS

Ph: 483-9714

Sharron.vic.peters@orcon.net.nz

Shona MICHIE

Ph: 418-5375

shlam@xtra.co.nz**NON-COMMITTEE****Branch Library**

Pam HAMLIN

Ph: 444-9151

Cliff-pam@xtra.co.nz**Maintenance/Repairs**

Alan TAYLOR

Ph: 418-3971

Night Meeting/Supper**Research Officer**

Dennise COOK

Ph: 473-5351

Speaker's Calendar

Position Vacant

Publicity NZSG &**Door/ night meetings**

Shirley TURNER

479-4765

Newsletter Editor

Pam OGIER

Ph: 486-1258

pamogier@ihug.co.nz**NEW ZEALAND SOCIETY OF GENEALOGISTS****NEWSLETTER** Volume 17, Issue 8, September 2012**MEETINGS** are held at Marlborough Park Hall, Chartwell Ave. Glenfield.**Day Meetings:** 1pm – 3-30pm: First Monday of the month,
February to December**Night Meetings:** 7-30pm– 9.30pm: Third Tuesday of the month
February to November**North Shore Branch Resource Room** at Marlborough Park Hall is open on
Wednesday from 1pm – 3pm.**On Monday meeting days** it will open at 12-30pm:**On Tuesday meeting nights** it will open at 6-45pm**MEETINGS CALENDAR****Monday 3rd September 2012****Speaker:** John Stead**Subject:** "The Order of St Lazarus of Jerusalem"

This Order was first founded in the 11th century in a leper hospital and played a large part in the extermination of leprosy from Europe centuries ago. It was first established in New Zealand in 1963 to continue the work with those suffering from leprosy in Asia and the Pacific Islands. There are about 230 members here in New Zealand (members are also involved in humanitarian work on a local level), with 3,000 worldwide.

Tuesday 18th September 2012**The Resource Room – Seek and You Might Find !!**

Military books, shipping, directories which contain lists of people and the family names they are researching (both in New Zealand and overseas), microfiche other than births, marriages and deaths, telephone directories, electoral rolls, New Zealand Government Gazettes, hardcopy cemetery headstone transcriptions. This and much more. Have a look among the shelves and see what you may have missed. *(It has been reported that last month's Evening Meeting "Searching in the Resource Room" was well attended and very successful. This is another chance for those who missed it.)*

Monday 1st October 2012**Speaker:** Rose Young – Curator of History**Subject:** "Family Stories from the Auckland War Memorial Museum"

Rose will give a Power Point presentation regarding the history practice in Museum, and the significance of personal and family stories in researching, interpreting and presenting objects.

Tuesday 16th October 2012**Speaker:** Jack Maddox**Subject:** "CMT – Compulsory Military Training"

AT THE BRANCH RESOURCE ROOM

TAPE RECORDINGS OF PAST SPEAKERS

These tapes are in the filing cabinet in the corner in front of the sink. They may be borrowed for one month.

Dennise has indexed these tapes in two parts. One part is a list of speakers in alphabetical order and the other a list of subjects. The index may be found in the Library catalogue which is in the catalogue folder on the bookcase in front of the window and also on the computer catalogue.

RECENT NEWSLETTERS

WELLINGTON BRANCH NZSG- July 2012

Tells of Hearth Tax which was levied on householders between 1662 and 1689. Dates for individual counties and other information. Lists of householders at www.hearthtax.org.uk

WELLINGTON BRANCH NZSG - August 2012

DUNEDIN BRANCH NZSG – July/Aug 2012

KILBIRNIE BRANCH NZSG – August 2012

HUTT VALLEY BRANCH NZSG - August 2012

See pages 5 & 6:-

TIMELINE OF INFORMATION AND LAW CHANGES ETC. FOR NZ BDM'S (e.g. in 1933 *minimum age for marriage in N.Z. was raised to 16. Prior to this date there was no age limit but some sources indicate it was 14 for males and 12 for females,*)

DUNEDIN FAMILY HISTORY GROUP – Aug 2012

Featuring MacAndrew Bay, Portobello, Airlie Bank and includes the names of many past residents of these places.

NEW BOOKS

Donated by Shirley Turner

My Hand Will Write What my Heart

Dictates: The unsettled lives of women in nineteenth-century New Zealand as revealed to sisters, family and friends.

The Omamari Story: The story of a farm settlement of North Auckland. Developed for the rehabilitation of ex-servicemen of World War Two, and subsequently for civilians.

Soldiers of the Mangateparu: "Land does not belong to the people; people belong to the land." Lands for sale or lease for discharged soldiers.

Bohemia to Puhoi:

Remembering: Writing Oral History

To Fight for the Empire: An illustrated history of New Zealand and the South African War 1899-1902

Petticoat Whalers: Whaling wives at sea, 1820-1920

The Beauty of the Bay: St Mary's Bay and Westhaven

Waimamaku: A very special settlement

A Lucky Landing: The Story of the Irish in New Zealand

Donated by Sue Speight

David Bishell Caythorpe: The Story of a Man, His Farm and his Family

BOOKS

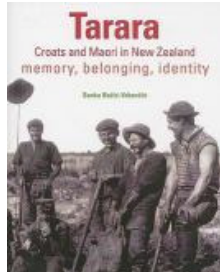
TARARA

Author:

Senka BOZIC-VRBANCIC

(available in non-fiction

section Takapuna, East Coast Bays & Northcote Libraries)



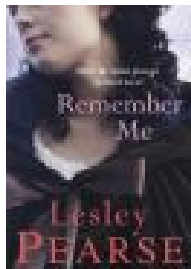
"The Maori name for Croats is **Tarara**. Between 1880 and the 1950s, Maori and Croat worked together on the kauri gumfields of the Far North and through intermarriage came to form a unique community. Drawing on sources ranging from official narratives on the kauri gum industry to Croatian and Maori oral histories and interviews, films and photographs, documents and museum representatives, Senka Bozic-Vrbancic investigates how identity "matters", as the very thing of politics and political action. Through the shared history of Maori and Croats, she explores issues of multiculturalism and biculturalism, hybridity, belonging, space, place and memory.

REMEMBER ME

Author:

Lesley PEARSE

(available in fiction section most North Shore and other Auckland Libraries)



In 1786 a fisherman's daughter from Cornwall called Mary Broad was sentenced to be hung for theft. But her sentence was commuted and she was one of the first to be transported to Australia. Based on a true story, this novel tells of Mary's experiences of harsh colony life.

More from the Branch Resource Room:-

FAMILY TREE MAGAZINE September 2012

European Ancestors – page 10

Travelling back to Railway Street – page 18

Quirky Victorians – A marvel to behold – page 28

The family history forecast – page 32

How to guide – 10 steps to success – page 42

Ancestors at work– Dairymaids & potato pickers Page48

Religious records for Ireland – page 52

A hero of the peninsular war – page 58

Merchant navy ancestors – page 66

Free CD from Family Tree Magazine

Staffordshire ancestors, Newcastle-Under-Lyme 1851 census

Samuel Lewis's Dictionary of Ireland 1839 (S-Y)

Parish registers for Tipton, Staffordshire 1697-1736

Auckland Central Library

Family history lunchtime series:-

Wednesday, 5th September
12 noon to 1pm

PapersPast with Emerson Vandy, National Libraries

Papers Past contains more than two million pages of digitised New Zealand newspapers and periodicals. The collection covers the years 1839 to 1945 and includes 77 publications from all regions of New Zealand.

Learn tips and tricks on how to make the most of your searches.

Whare Wananga

L2, Central City Library

Lorne Street, Auckland

Book online or phone 09 307 7771

<http://www.aucklandcitylibraries.com/whatson/familyhistory/familyhistoryseries.aspx>

Looking for the address of some-one in the U.K.?

Try "192.com" for good results.

A House on a Corner

From Shona Michie nee Couch

As children growing up in Tauranga we lived on the corner of Edgecumbe Road and Wrigley Street. The verge on Wrigley Street was wide and the grass grew long and tall – a wonderful place in which to play. Also on the verge just outside the back gate was the firewood heap and often Dad had a vege plot planted.

There was a chain across the Edgecumbe Road side of the section to stop animals coming on to the property when they were driven past on sale day. Often a herd of cattle or a mob of sheep would come along Edgecumbe Road on their way to the sale yards at Judea. A farmer, on foot or on a horse, and his dogs would be accompanying the herd.

I recall my Dad, Stan Couch, saying that his Father had always said “buy a corner section you can’t be built out”. Dad grew up on the corner of Ashridge Road and Vigor Brown Street in Napier.

In 2004, whilst staying with Hazel (nee Garnham) and Ralph Strand I had the opportunity to go looking for the place where Grandad George Couch had lived at the turn of the century. I duly arrived at 173 Offord Road Islington and stood there admiring the tree lined street, the blue door of the house then suddenly exclaimed “**oh, it’s on a corner!**”

Yes, the house where Grandad lived as a boy was on the corner of Offord Road and Arundel Place, Islington, London.



173 Offord Road from Google maps



We extend our heartfelt sympathy to Jill Williams on the recent loss of her husband. Jill is a member who is very active in many aspects of this Branch.

DONATIONS TO THE RESOURCE ROOM

We have very limited space for additional material in the library.

Please ask the Librarian before you bring in any extra material. We will then check the catalogue to see if we have the books you are offering. If we already have these books or they are not considered suitable for our collection we will offer them for sale to our members. The sale of such material helps our Branch funds.